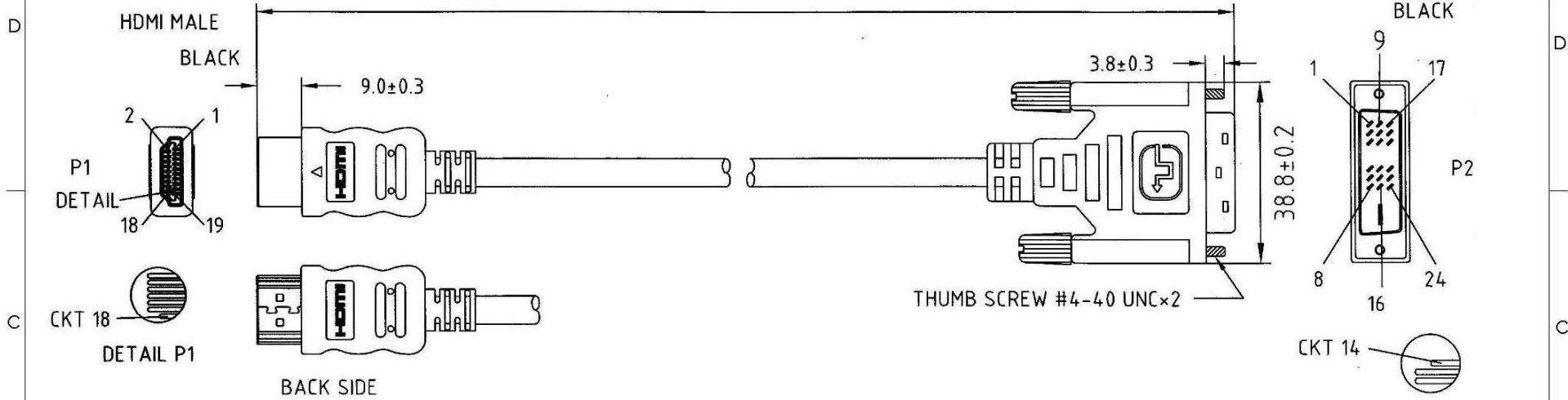


THE INFORMATION AND ILLUSTRATIONS CONTAINED IN THIS DRAWING ARE THE PROPERTY OF FOLIUMCEI. ANY UNAUTHORIZED REPRODUCTION IN WHOLE OR IN PART IS STRICTLY PROHIBITED.

REVISIONS			
REV	DESCRIPTION	DATE	APPROVED
A	INITIAL RELEASE	3/1/2007	GS

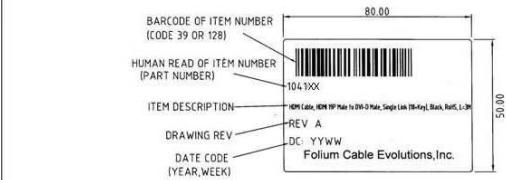
LENGTH = XX IN METERS



HDMI	PIN OUT	DVI_D	CABLE FUNCTION
P1		P2	
1		2	TMDS DATA 2+
3		1	TMDS DATA 2-
2		3	TMDS DATA 2 SHIELD
4		10	TMDS DATA 1+
6		9	TMDS DATA 1-
5		11	TMDS DATA 1 SHIELD
7		18	TMDS DATA 0+
9		17	TMDS DATA 0-
8		19	TMDS DATA 0 SHIELD
10		23	TMDS CLOCK +
12		24	TMDS CLOCK -
11		22	TMDS CLOCK SHIELD
15		6	DDC CLOCK(SCL)
16		7	DDC DATA(SDA)
17		15	GROUND(+5V&DDC)
18		14	POWER +5V
19		16	HOT PLUG DETECT
SHELL	B.D	SHELL	GROUND

NOTE:

- CABLE:** UL-20276 [#28(7/0.127)×1P INS:FO-SKIN + D.W(7/0.127) + Free-Edge-Foil/Mylar]×4C + #28(7/0.127)×1P INS:PP + #28(7/0.127)×5C INS:PP + AL/MY + B.D(85%)T.C PVC JACKET OD:6.6±0.2mm COLOR:BLACK(NK-K01) .(1.3b)
- CONNECTOR:**
P1: HDMI 19P MALE W/PCB CONTACT:15u"; NICKEL PLATED SHELL.
P2: DVI 18+1 DIGITAL MALE CONTACT:GOLD FLASH,SHELL:NICKEL-PLATED .
- SHIELD:**P1:INNER MOLD MUST BE WRAPPED COPPER 360° TO CONNECTOR SHELL & CABLE BRAID
P2 SHIELD:COPPER FOIL 360° SOLDER TO CONNECTOR SHELL & CABLE BRAID .
- HOOD:**P1&P2:MOLDED TYPE,PVC 45P,COLOR:BLACK
- ELECTRICAL TEST:**
(1)100% OPEN SHORT & MIS WIRE TEST.
(2)CONTACT RESISTANCE 3 ohm Max .
(3)INSULATION RESISTANCE 10M ohm Min .
(4) HI - POT DC 300V
- PACKING:**EACH PC / POLYBAG+LABEL



UNLESS OTHERWISE SPECIFIED, DIMENSIONS ARE IN INCHES. TOLERANCES ARE:
.X ±.1
.XX ±.05
.XXX ±.005
CABLE LENGTH TOLERANCE
<300' ±5% >300' ±2%

APPROVALS	DATE
DRAWN BY SC	03/01/2007
CHECKED BY MH	03/01/2007
APPROVED BY GS	03/01/2007



ITEM DESCRIPTION		HDMI CABLE, HDMI 19P MALE TO DVI-D MALE, SINGLE LINK (18+KEY)
SIZE	ITEM NUMBER	
A	1041XX where "XX" = Length in Meters	REV. A
SCALE: NONE CAD FILE: AUTHORIZED ACCESS ONLY		SHEET 1 OF 1