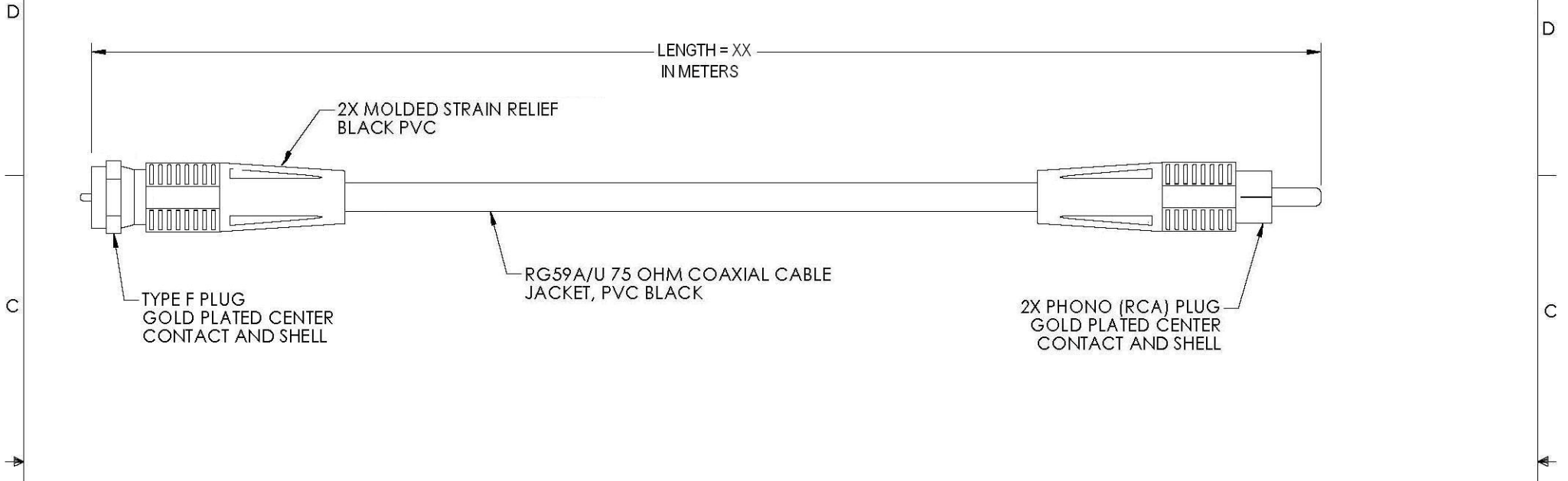
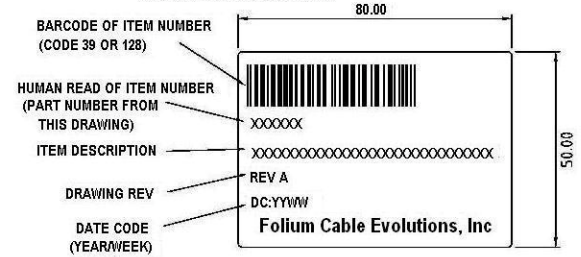


THE INFORMATION AND ILLUSTRATIONS CONTAINED IN THIS DRAWING ARE THE PROPERTY OF FOLIUMCEI. ANY UNAUTHORIZED REPRODUCTION IN WHOLE OR IN PART IS STRICTLY PROHIBITED.

REVISIONS			
REV	DESCRIPTION	DATE	APPROVED
A	INITIAL RELEASE	3/1/2007	GS



INDIVIDUAL BAG LABEL:



NOTES:
 CABLE ASSEMBLY SHALL BE TESTED FOR CONTINUITY.
 CABLE ASSEMBLY SHALL BE INDIVIDUALLY PACKAGED IN A POLY BAG.



UNLESS OTHERWISE SPECIFIED, DIMENSIONS ARE IN INCHES. TOLERANCES ARE:
 .X ±.1
 .XX ±.05
 .XXX ±.005
 CABLE LENGTH TOLERANCE
 <300" ±5% >300" ±2%

APPROVALS	DATE
DRAWN BY SC	03/01/2007
CHECKED BY MH	03/01/2007
APPROVED BY GS	03/01/2007



ITEM DESCRIPTION COAXIAL VIDEO CABLE, 75 OHM, RG59A, RCA MALE / TYPE F MALE (CABLE TV)		
SIZE A	ITEM NUMBER 5514XX where "XX" = Length in Meters	REV. A
SCALE: NONE		CAD FILE: AUTHORIZED ACCESS ONLY
		SHEET 1 OF 1