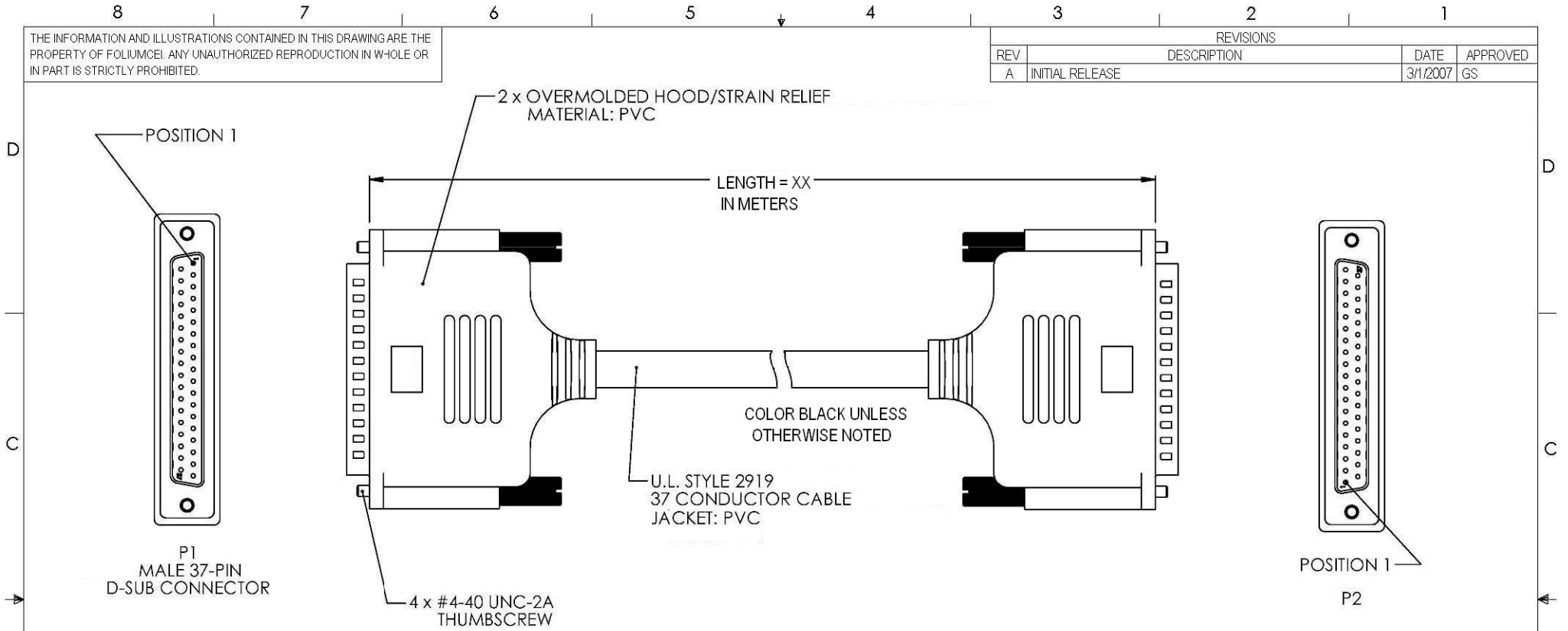
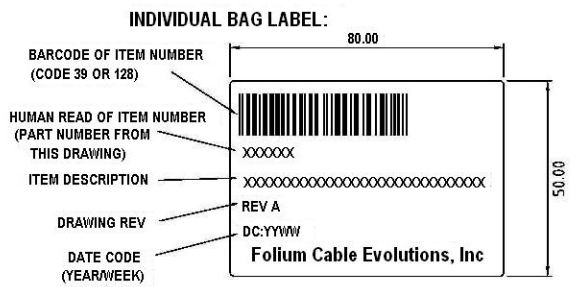


THE INFORMATION AND ILLUSTRATIONS CONTAINED IN THIS DRAWING ARE THE PROPERTY OF FOLIUMCEI. ANY UNAUTHORIZED REPRODUCTION IN WHOLE OR IN PART IS STRICTLY PROHIBITED.

REVISIONS			
REV	DESCRIPTION	DATE	APPROVED
A	INITIAL RELEASE	3/1/2007	GS



P1	P2	P1	P2
1	1	20	20
2	2	21	21
3	3	22	22
4	4	23	23
5	5	24	24
6	6	25	25
7	7	26	26
8	8	27	27
9	9	28	28
10	10	29	29
11	11	30	30
12	12	31	31
13	13	32	32
14	14	33	33
15	15	34	34
16	16	35	35
17	17	36	36
18	18	37	37
19	19	SHELL	SHELL



NOTES:  
 1. CABLE ASSEMBLY SHALL BE TESTED FOR CONTINUITY  
 2. EACH CABLE ASSEMBLY SHALL BE PACKAGED IN A POLY BAG



UNLESS OTHERWISE SPECIFIED, DIMENSIONS ARE IN INCHES. TOLERANCES ARE:  
 .X ±.1  
 .XX ±.05  
 .XXX ±.005  
 CABLE LENGTH TOLERANCE  
 <300" ±5% >300" ±2%

APPROVALS	DATE
DRAWN BY SC	03/01/2007
CHECKED BY MH	03/01/2007
APPROVED BY GS	03/01/2007



ITEM DESCRIPTION		
D-SUB CABLE ASSY, DB37 MALE / MALE, MOLDED, SHIELDED		
SIZE	ITEM NUMBER	REV.
A	2007XX where "XX" = Length in Meters	A
SCALE: NONE		CAD FILE: AUTHORIZED ACCESS ONLY
		SHEET 1 OF 1